

3 LOW HEADROOM HOIST NB, REEVING: 04

Hoist dimensions

HOL m	Length code	M1 mm	H2 mm	H3 mm	H3* mm	BUF mm	Weight kg
6	A	326	45	495	510	368	180
9.5	C	456	72	495	510	498	200

Motor dimensions

Motor	P1	P2	P3	A3	S3
MOT (mm)	386	446	476	446	526
Weight (kg)	21	31	35	32	28

Trolley dimensions

B min.	B max.	ØWD	ØBU	BU	BUH	E1	E2	GEA	H1	H4	TD
80	410	80	40	42	28	100	461	110	203	524	153
TF	TH	TW									
32	248	29									

D002080_A
062124

C-dimensions

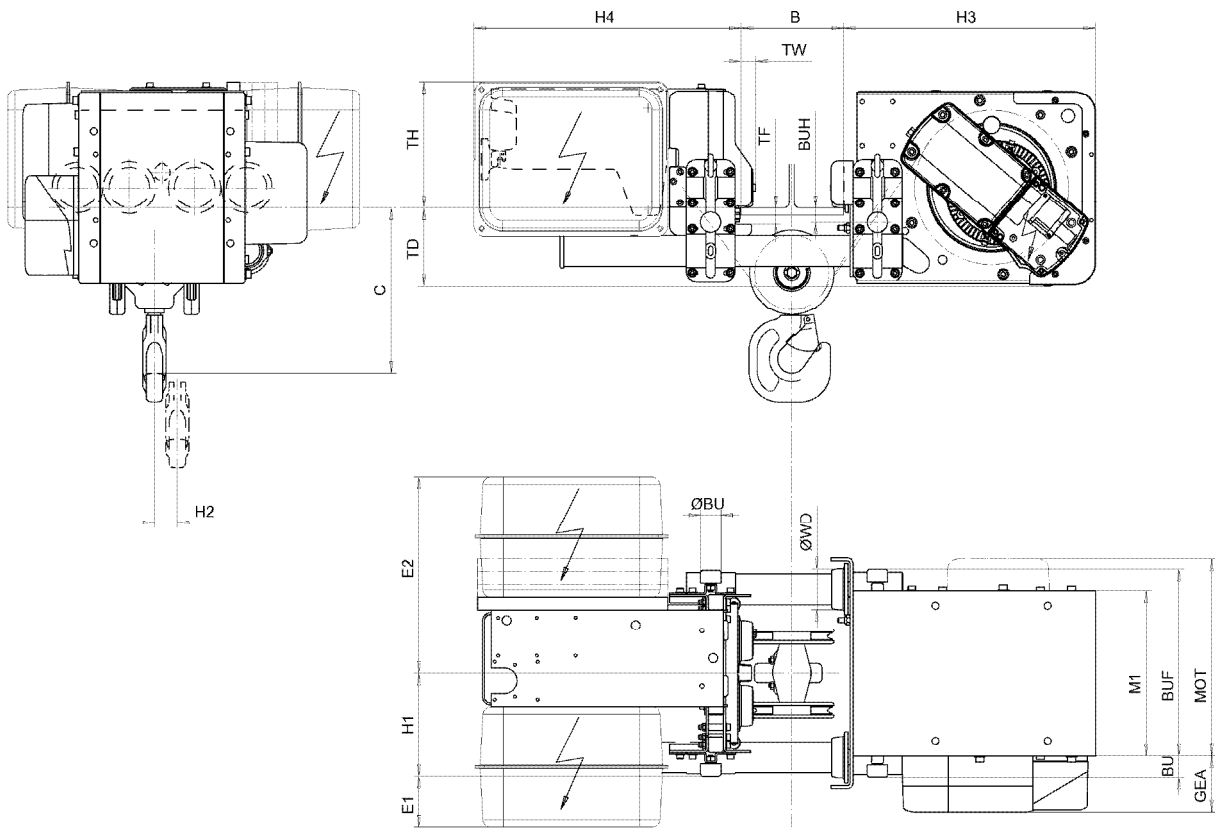
B	C
80 - 270	350
271 - 320	380
321 - 370	410
371 - 410	435

Note: All dimensions in mm.

Note: Weight calculated with P1 motor.

* Please, disregard the dimension H3*.

Low Headroom Hoist NB, REEVING: 04



D002080-A