

## 22 DOUBLE GIRDER HOIST ND, REEVING: 2 X 02

### Hoisting speed (m/min)

Load kg	Class Fem/ISO	F gear + P5/T5 motor		H gear + P6/T6 motor		J gear + P7/T7 motor	
		High	Low	High	Low	High	Low
4000	3m/M6	10	1,7	16	2,7	20	3,3
5000	2m/M5	10	1,7	16	2,7	20	3,3

### Hoist dimensions

HOL m	Length code	M1 mm	M3 mm	H1 mm	Min R mm	Weight kg
8,5	D	697	279	705	1400	720
13	E	817	217	705	1400	780
18	F	967	292	855	1700	790
25	G	1157	197	855	1700	850
33,5	H	1407	255	1036	2000	880
46	J	1757	280	1236	2400	985

### Motor dimensions

Motor	P5	P6	P7	T5	T6	T7
M4 (mm)	728	722	762	728	722	722
Weight ( kg )	58	85	105	45	65	71

### Trolley dimensions

C	D1 (Ø)	D2 (Ø)	D3 (Ø)	M2	WB	WW min	WW max				
735	110	140	63	128	1000	50	75				
L1	L2	L3	L4	L5	L6	L7	L8	L9	L10	L11	L12
382	430	400	15	98	320	1296	22	510	420	100	488
L13	L14	L15	L16	L17	L18	L19	L20				
512	636	660	148	88	900	148	255				

D002134\_A  
005028

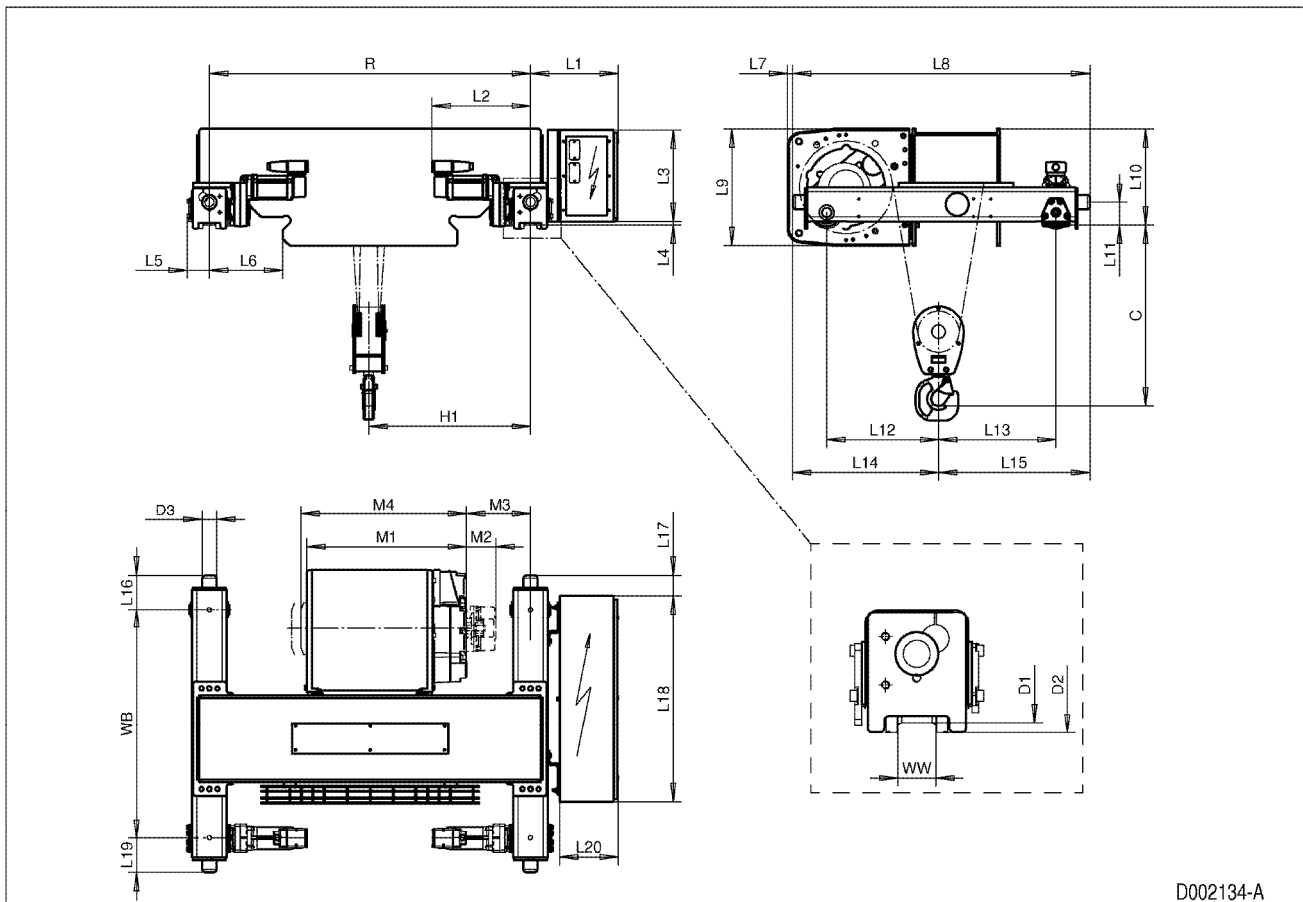
Note: Weight calculated with P5 motor.

Note: All dimensions in mm.

Note: Min R with service platform and second brake.

Note: Standard rail gauges: 1400, 1700, 2000 and 2400.

Note: Gear brake as standard brake for drum lengths H and J.



D002134-A