

25 DOUBLE GIRDER HOIST ND, REEVING: 2 X 08

Hoisting speed (m/min)

Load kg	Class Fem/ISO	F gear + P5/T5 motor		H gear + P6/T6 motor		J gear + P7/T7 motor	
		High	Low	High	Low	High	Low
16000	2m/M5	2,5	0,4	4	0,7	5	0,8
20000	1Am/M4	2,5	0,4	4	0,7	5	0,8

Hoist dimensions

HOL m	Length code	M1 mm	M2 mm	H1 mm	Min R mm	Weight kg
4,5	F	967	292	851	1700	890
6	G	1157	197	855	1700	950
8	H	1407	255	1032	2000	980
11,5	J	1757	280	1232	2400	1085

Motor dimensions

Motor	P5	P6	P7	T5	T6	T7
M3 (mm)	728	722	762	728	722	722
Weight (kg)	58	85	105	45	65	71

Trolley dimensions

C	D1 (Ø)	D2 (Ø)	D3 (Ø)	WB	WW min	WW max					
831	140	170	63	1000	50	85					
L1	L2	L3	L4	L5	L6	L7	L8	L9	L10	L11	L12
382	470	400	100	320	52	1326	510	423	100	463	537
L13	L14	L15	L16	L17	L18	L19	L20	L21			
626	700	128	163	103	900	163	255	18			

D002136_A
005034

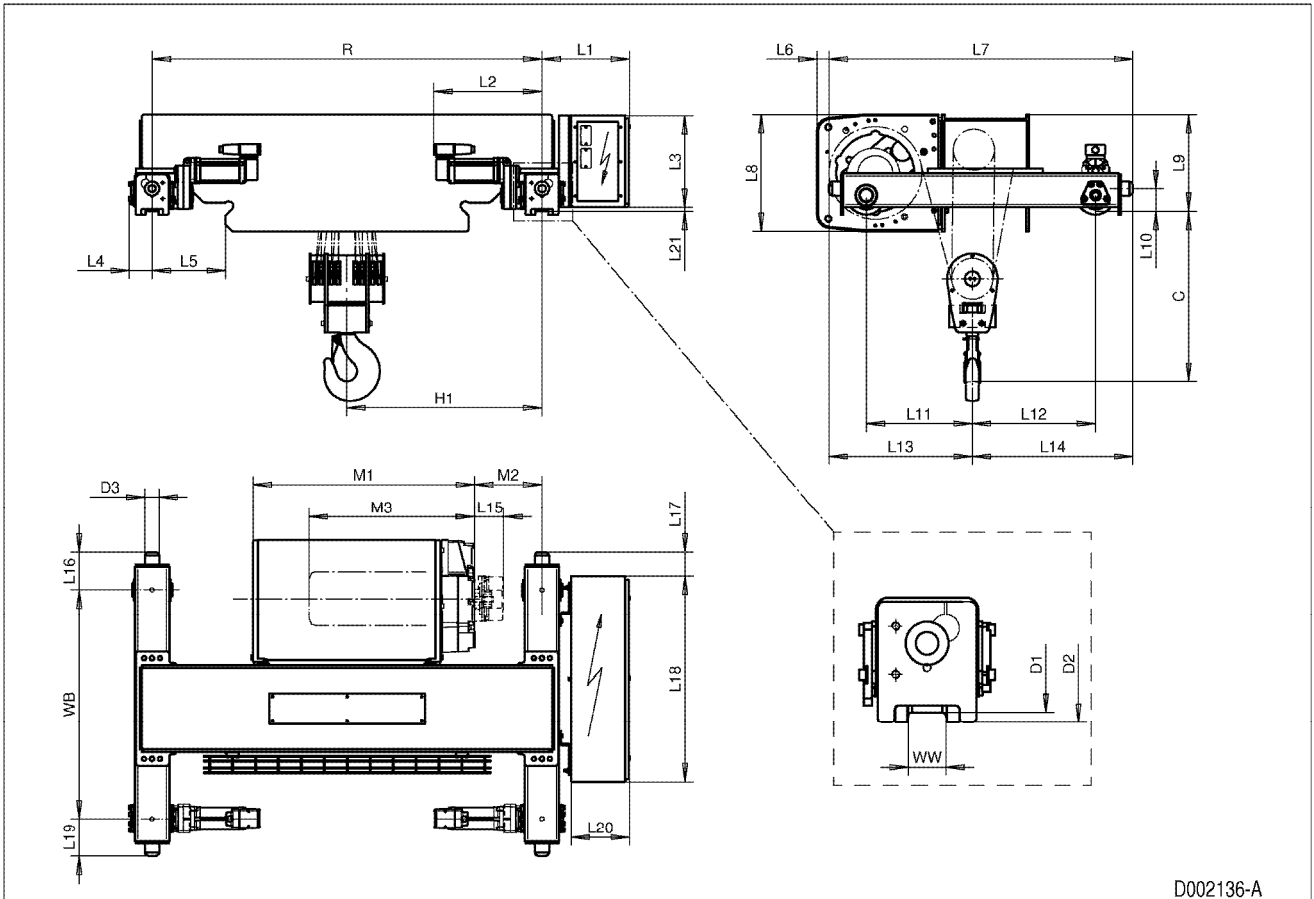
Note: Weight calculated with P5 motor.

Note: All dimensions in mm.

Note: Min R with service platform and second brake.

Note: Standard rail gauges: 1400, 1700, 2000 and 2400.

Note: Gear brake as standard brake for drum lengths H and J.



D002136-A