

## 26 DOUBLE GIRDER HOIST NE, REEVING: 02

### Hoisting speed (m/min)

Load kg	Class Fem/ISO	E gear		F gear		G gear		H gear		J gear	
		High	Low	High	Low	High	Low	High	Low	High	Low
		8	1,3	10	1,7	12,5	2,1	16	-	20	-
6300	3m/M6	P6/T6 motor		P6/T6 motor		P7/T7 motor		T8 motor		T9 motor	
8000	2m/M5	P6/T6 motor		P6/T6 motor		P7/T7 motor		T8 motor		T9 motor	
10000	1Am/M4	P6/T6 motor		P7/T7 motor		P8/T8 motor		T9 motor		TA motor	

### Hoist dimensions

HOL m	Length code	M1 mm	M3 mm	H1 mm	H2 mm	Min R mm	Max R mm	Weight kg
15,5	C	462	658	723	139	1400	2400	1600
21	D	562	784	859	188	1700	2400	1700
28	E	682	784	859	251	1700	3100	1740
36	F	832	934	985	322	2000	3800	1860
47	G	1022	1144	1141	421	2400	4200	2020
61	H	1272	1480	1468	546	3100	4200	2210
80,5	J	1622	1544	1567	721	3400	4200	2510
97	K	1922	1970	1929	868	4200	4200	2870

### Motor dimensions

Motor	P6	P7	P8	T6	T7	T8	T9	TA
M2 (mm)	536	576	711	536	536	536	536	576
Weight ( kg)	85	105	106	65	71	81	92	106

### Trolley dimensions

C	D1 (Ø)	D2 (Ø)	D3 (Ø)	WB	WW min	WW max					
922	140	170	63	1400	50	85					
L1	L2	L3	L4	L5	L6	L7	L8	L9	L10	L11	L12
428	472	400	122	100	51	1726	702	540	100	651	749
L13	L14	L15	L16	L17	L18	L19	L20	L21			
865	912	44	218	163	255	900	117	163			

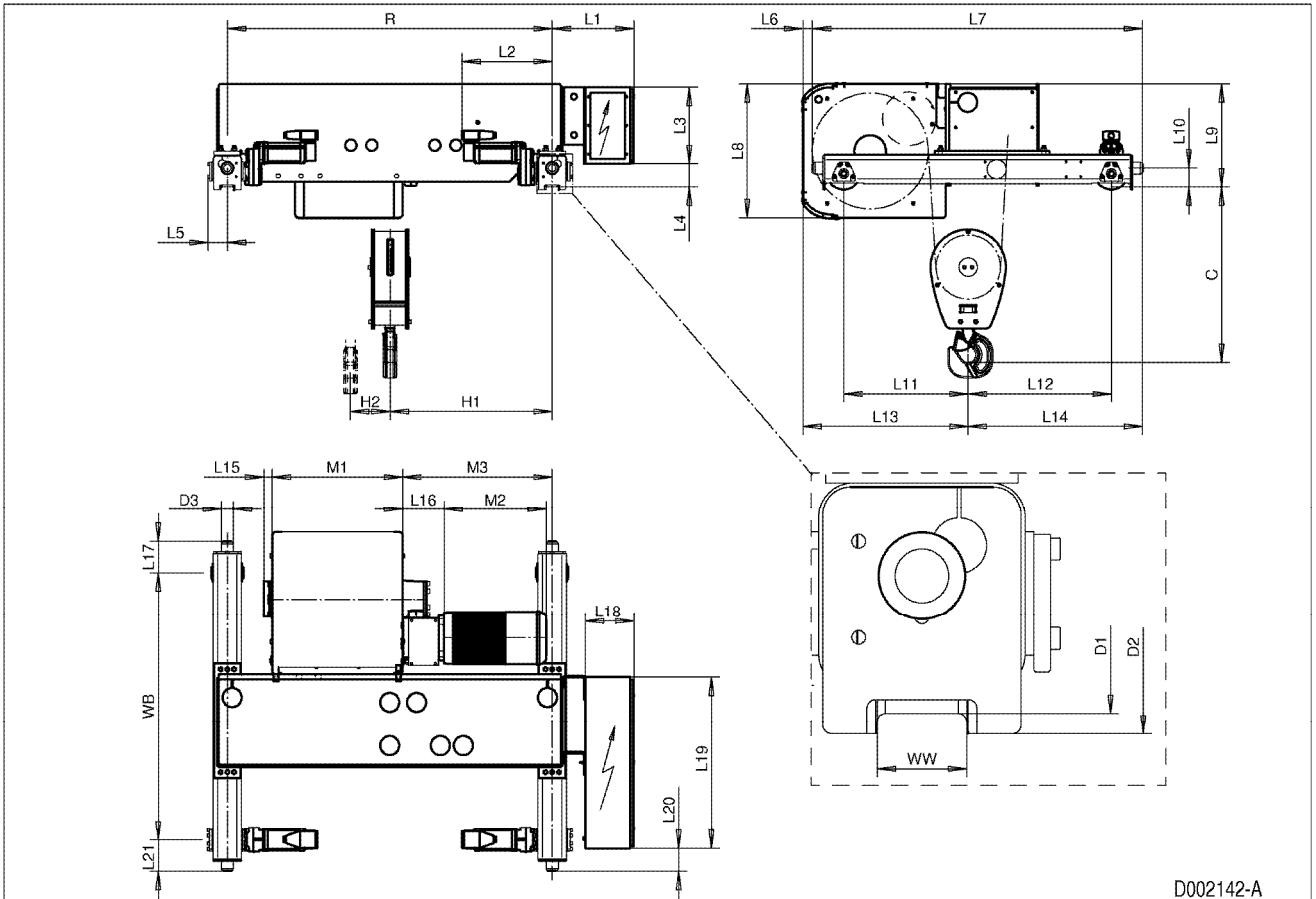
D002142\_A  
005038

Note: Weight calculated with P6 motor.

Note: All dimensions in mm.

Note: Standard rail gauges: 1400, 1700, 2000, 2400, 2700, 3100, 3400, 3800 and 4200.

Note: H1, M3 and weight calculated with min R.



D002142-A