

37 DOUBLE GIRDER HOIST NF, REEVING: 2 X 08

Hoisting speed (m/min)

Load kg	Class Fem/ISO	E gear		F gear		G gear		H gear		J gear	
		High	Low	High	Low	High	Low	High	Low	High	Low
		2	0,3	2,5	0,4	3,2	0,5	4	-	5	-
63000	2m/M5	P6/T6 motor		P6/T6 motor		P7/T7 motor		T8 motor		T9 motor	
80000	1Am/M4	P6/T6 motor		P7/T7 motor		T8 motor		T9 motor		-	

Hoist dimensions

HOL m	Length code	M1 mm	M3 mm	Min R mm	Max R mm	C mm	Weight kg
6,5	H	1272	564	2400	2700	1519	3650
9	J	1622	389	2400	3100	1519	4000
11	K	1922	389	2700	3400	1519	4300
13,5	L	2272	414	3100	3800	1774	4650
15,5	M	2522	439	3400	4200	1774	4950
17,5	N	2822	489	3800	4200	1774	5300

Motor dimensions

Motor	P6	P7	T6	T7	T8	T9
M2 (mm)	536	576	536	536	536	536
Weight (kg)	85	105	65	71	81	92

Trolley dimensions

D1 (∅)	D2 (∅)	D3 (∅)	WB	WW min	WW max						
280	250	100	1400	55	100						
L1	L2	L3	L4	L5	L6	L7	L8	L9	L10	L11	L12
488	600	80	173	578	65	1910	702	680	150	658,5	741,5
L13	L14	L15	L16	L17	L18	L19	L20	L21	L22		
978,5	996,5	44	218	255	600	1013	200	315	255		

D002338_A
062409

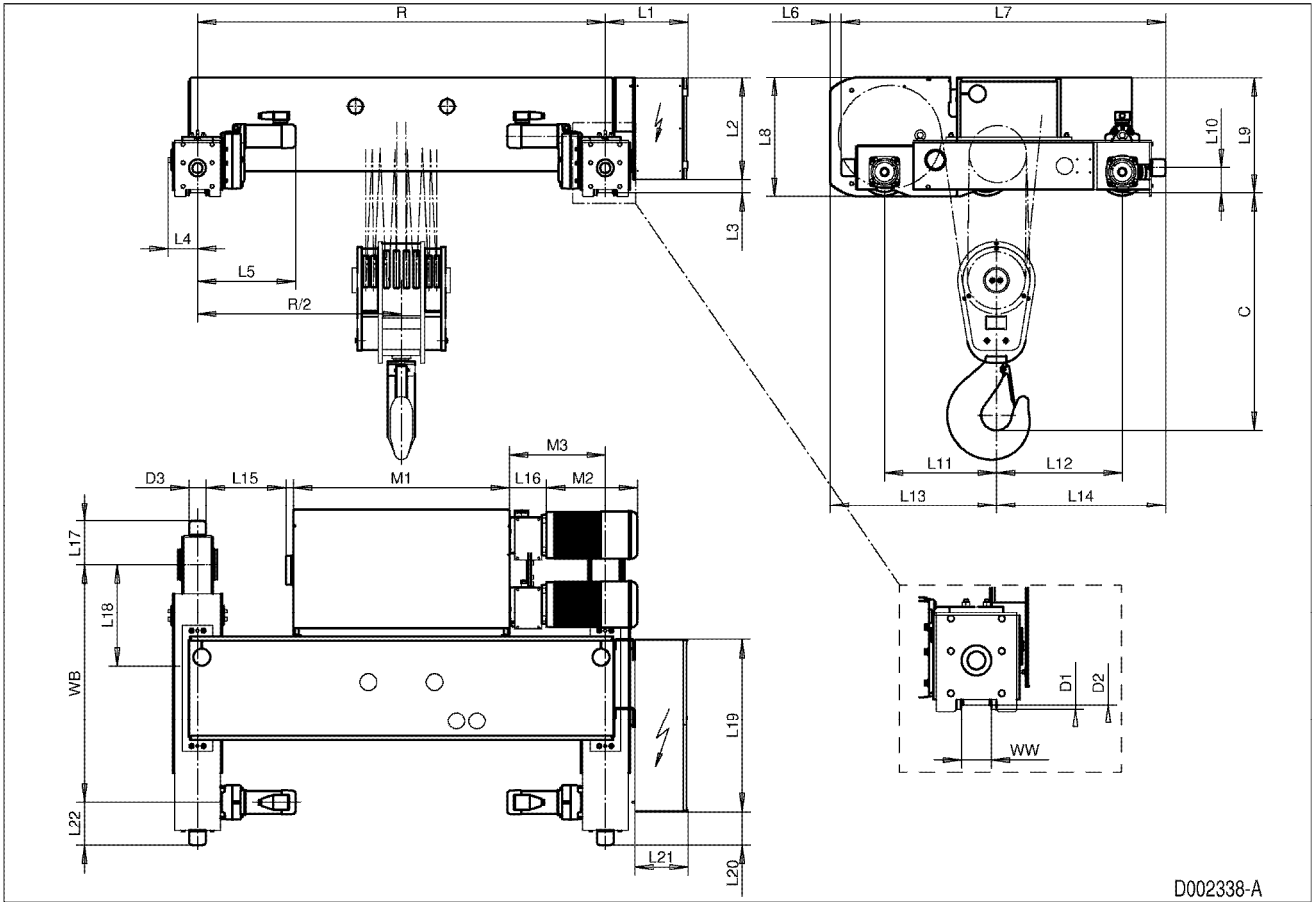
Note: Weight calculated with P6 motor.

Note: All dimensions in mm.

Note: Min R with service platform.

Note: Standard rail gauges: 2000, 2400, 2700, 3100, 3400, 3800 and 4200.

Note: M3 and weight calculated with min R.



D002338-A